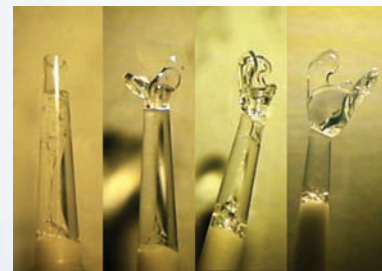


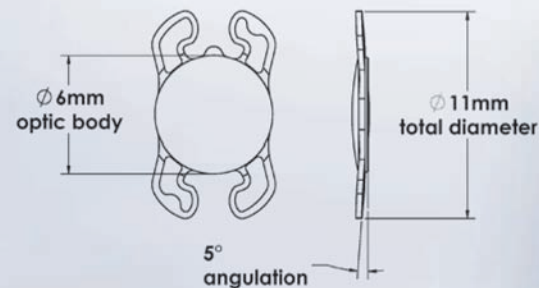
Mini Incision implantation

- Easily and safely injected through an incision as small as 1.8 mm
- Lower surgically induced astigmatism
- Fast recovery after surgery, less inflammation
- Less trauma to the cornea and the eye
- Less endothelial cell loss



Technical Specifications

- Overall length 11.0 mm
- Optic diameter 6.0 mm
- Haptic angulations 5°
- Edge design 360° square edge
- Optic design Aspheric Biconvex design
- Power range 1.0-10.0 (1D increments)
- 10.5-30.0 (0.5D increments)
- 31.0-40.0 (1D increments)
- Material Hydrophilic Acrylic HEMA/EOEMA copolymer
- Refractive Index 1.46 (hydrated @ 35°C)
- Y.A.G laser Compatible
- Estimated A constant SRK/T IOLMASTER biometry: 118.5*
- SRK/T US biometry: 118.16*
- Placement Capsular Bag
- CE Approved



* It is recommended that surgeons personalize their A-constant based on their surgical techniques and equipment, experience and post-operative results. For more information please visit Hanita Lenses web site.

Hanita Lenses

Hanita Lenses is an Intraocular Lens and contact lenses manufacturer, which is active in the global market since 1981.

Hanita Lenses' strategy focuses on technology and innovative R&D, in order to keep the company as a dynamic leading player in the Medical Device Ophthalmic market. The company holds high-end technologies and vast knowledge in the refractive and cataract surgery fields.

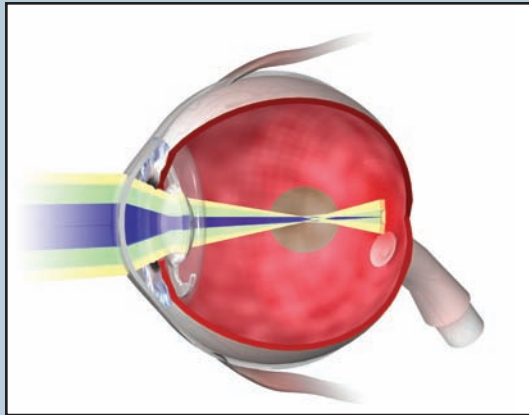
BunnyLens AF

Providing Aberration Free Vision

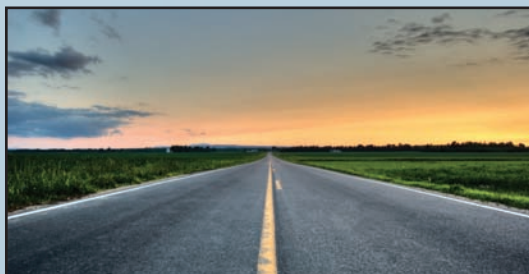
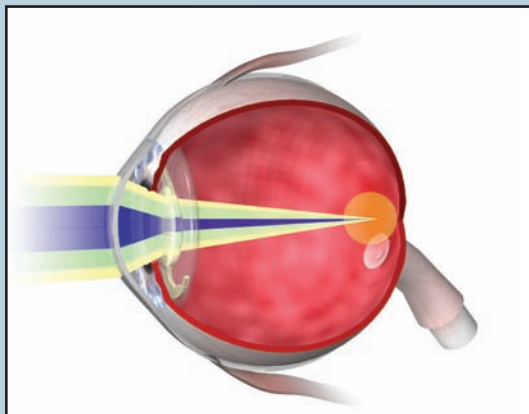


See for yourself

Spherical Lens
Spherical aberration



BunnyLens AF
Aberration free



- **BunnyLens AF** reduces spherical aberration to minimum.
- **BunnyLens AF** improves functional vision
- **BunnyLens AF** improves night vision
- **BunnyLens AF** designed with the most advanced optical tools

BunnyLens AF, the new Aspheric Intraocular lens from Hanita Lenses, provides the patient with an excellent vision quality at day and night conditions, by using state-of-the-art aberration free aspheric optical design.

Advanced Optical Design

The Aspheric BunnyLens AF was designed using the most advanced tools by a professional R&D team of optical and mechanical engineers. The optical profile of the BunnyLens AF was calculated using ZEMAX™ software – a simulating tool for the optical design optimization.

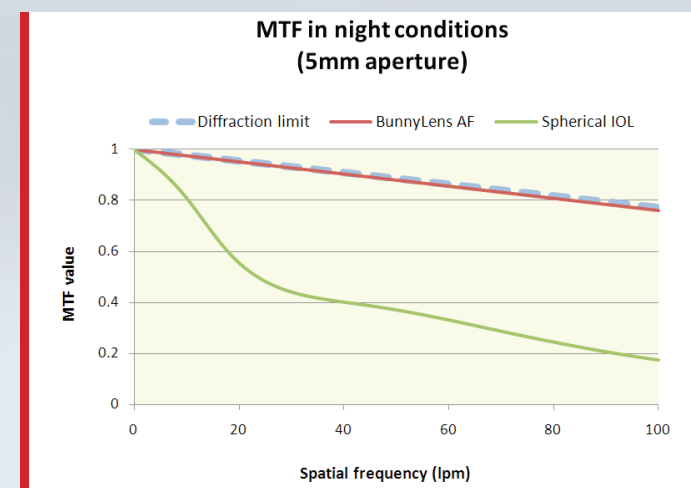
Calculations were aimed to minimize all aberrations, including the spherical aberration of the cornea, and to optimize the MTF (Modular Transfer Function)

Eye Model

The Optical design of BunnyLens AF was performed using the advanced Arizona Eye model.^[1]

The parameters and dimensions of the eye model are consistent with average human data. The model was designed to match clinical levels of aberrations, both on and off axis. The retina curvature is designed to split the tangential and sagittal foci off-axis. The result is an accurate simulation of the visual performance of the BunnyLens AF in the Post-operative eye.

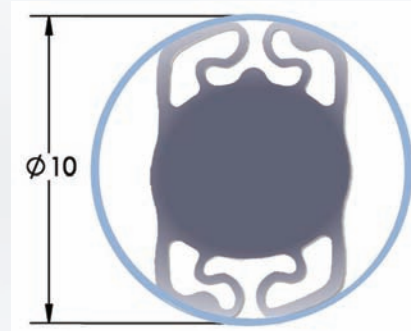
[1] Field Guide to Visual and Ophthalmic Optics; Jim Schwiegerling; Nov 2004



The BunnyLens AF design provides an excellent optical quality at night conditions, near the theoretical limit

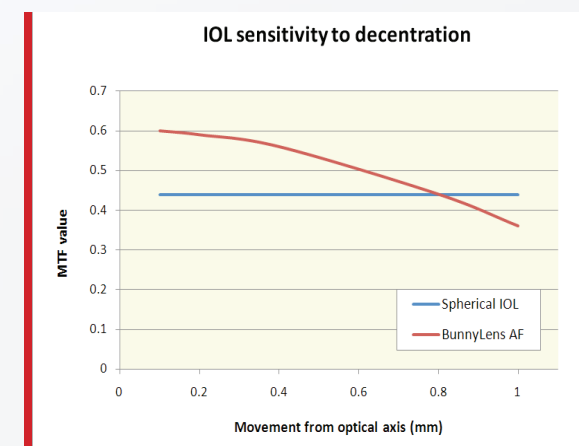
Geometrical Design

- BunnyLens AF ensures excellent stability and centration due to the 4-point haptic design
- 360° double square edge in order to minimize PCO

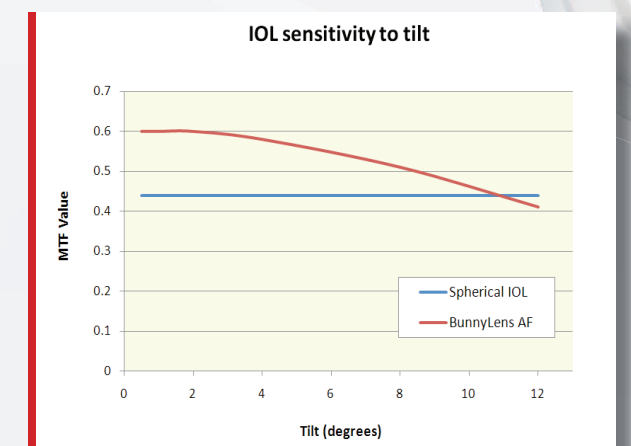


BunnyLens AF provides wide angle of contact with the capsular bag

Stability and Centration



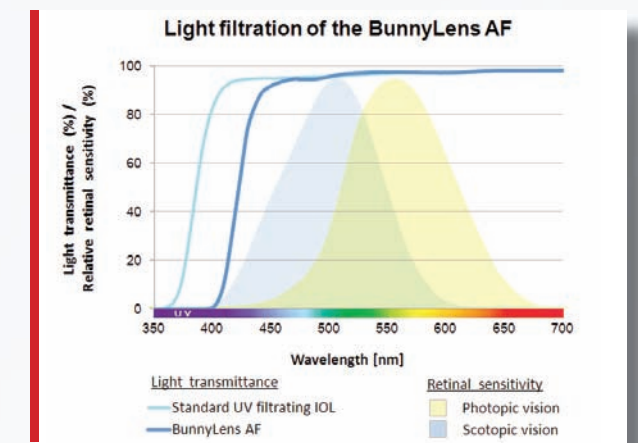
The BunnyLens AF design provides a visual advantage over spherical lens even if decentered up to 0.8 mm



The BunnyLens AF design provides a visual advantage over spherical lens even if tilted up to 10.9 degrees

Material

- The BunnyLens AF is made of a hydrophilic acrylic material, with proven reputation and many years of clinical experience
- The BunnyLens AF is characterized by excellent biocompatibility and mechanical quality
- The BunnyLens AF material incorporates a violet filtering chromophore for better protection of the retina



The BunnyLens AF provides protection for the retina, by blocking light of wavelength below 400 nm