



**SeeLens MF, the new diffractive multifocal aspheric intraocular lens from Hanita Lenses, provides the patient with an excellent depth of focus for the near, intermediate and far visual ranges. The use of SeeLens MF reduces spectacle dependency for reading, driving and using the computer.**

### Advanced Optical Design

The SeeLens MF was designed using the most advanced tools by a professional R&D team of optical and mechanical engineers.

The optical diffractive apodized aspheric profile was developed using proprietary algorithms and the Zemax™ software. Calculations were optimized in order to provide optimal energy distribution in different light conditions, minimize spherical aberrations and generate +3.0D addition power for near vision, equivalent to +2.4D at the spectacle plane.



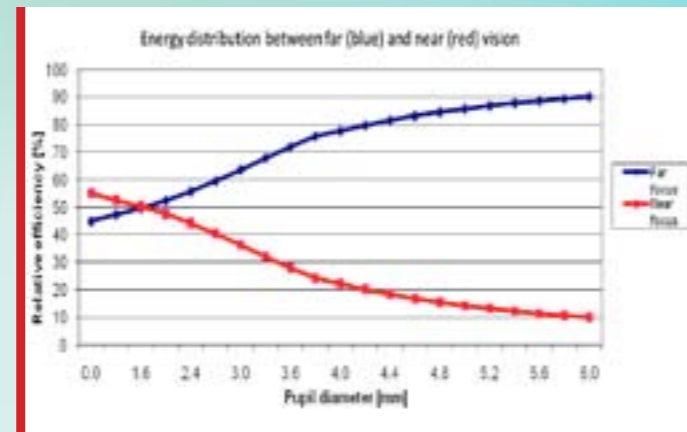
### Apodized Diffractive Optics

The diffractive steps are located in the 4mm central zone, suiting pupil sizes in various lighting conditions. The steps follow an apodization function, meaning they reduce in height according to an algorithm designed so the patient can function comfortably all day long.

The aspheric surface integrated with the diffractive profile is the SeeLens AF aberration free optic, which has been clinically proven to provide excellent vision in all conditions.

The state-of-the-art apodized diffractive surface provides visual functionality throughout the day:

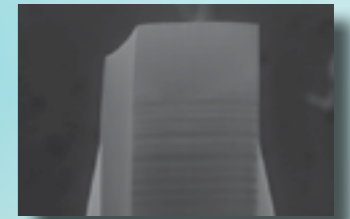
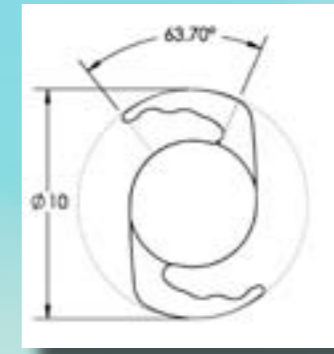
- In photopic conditions, when the pupil is small, the SeeLens MF distributes 65% of the light for far vision and 35% for near vision, providing light for all daytime activities.
- In mesopic and scotopic conditions, distance vision gets most of the light energy, enabling night vision and driving in the dark, when the pupil is enlarged.



- SeeLens MF reduces spherical aberration to a minimum
- SeeLens MF improves vision for near, far and intermediate distances
- SeeLens MF improves night vision
- SeeLens MF is designed with the most advanced optical tools

### Geometrical Design

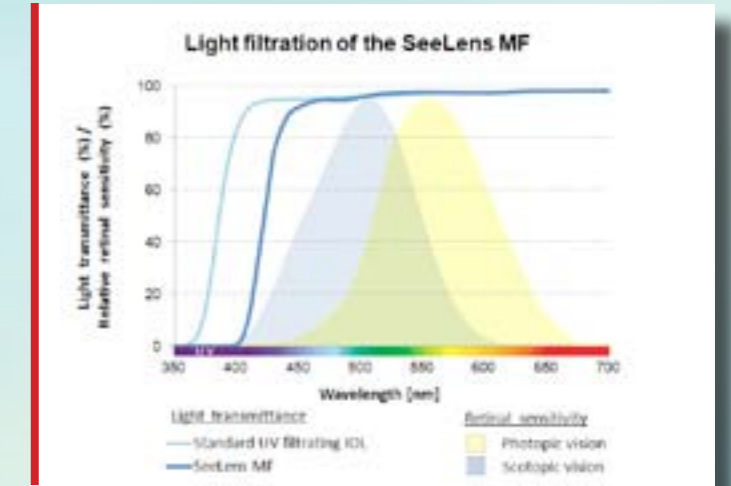
- Unique mechanical design of the haptics ensures excellent stability and centration of the SeeLens MF
- Wide angle of contact with the capsular bag.
- 360° sharp square edge for lowered PCO



SEM image of SeeLens MF edge design[1]  
[1]Image by Prof. Manfred Tetz, ATK Spreebogen Berlin.

### Material

- The SeeLens MF is made of a hydrophilic acrylic material, with proven reputation and many years of clinical experience.
- The SeeLens MF is characterized by excellent biocompatibility and mechanical quality.
- The SeeLens MF material incorporates a violet filtering chromophore for better protection of the retina.



The SeeLens MF provides protection for the retina, by blocking light of wavelength below 400 nm