

EDOF IOLs

Active



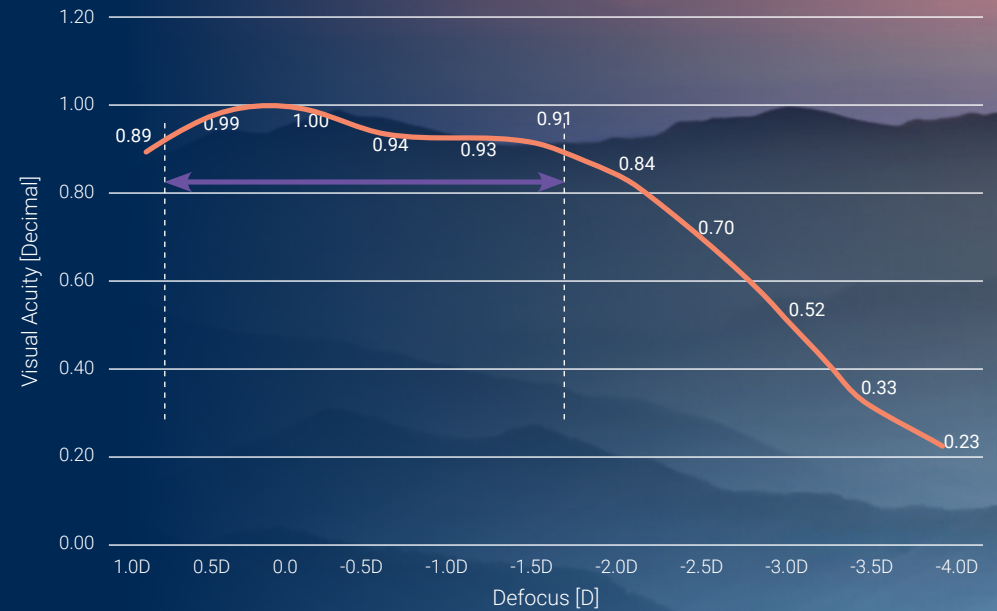
	Active SL	Active BN EZ *
Platform	C-Loop	4 - Loop
Overall Diameter	13.0mm	11 mm ($\geq 10D$) 11.5mm ($< 10D$)
Placement	Capsular Bag	
Optic diameter	6.0 mm	
Power range	0 to +30 (0.5D increments) +30 to +35 (1D increments)	
Addition	Add power: +3	
Cylinder range	-	1
Optic design	Aspherical Multifocal Diffractive Apodized	
360° Continuous Square Edge	Yes	
Haptic angulation	5°	
Material	Hydrophilic acrylic with bonded UV absorber and violet light filter	
Refractive Index	1.46 (hydrated @ 35°C)	
A-constant (SKR/T) for Optical or Immersion US biometry	118.6	118.5
A-constant (SKR/T) for Contact US biometry	118.27	118.16
Sterilization	Steam	

Provide Your Patient With a Real EDof Solution

The Active lens employs a diffractive pattern that allows your patient to be spectacle-free for both far and intermediate visual ranges.

Provide your patient with a real EDof solution

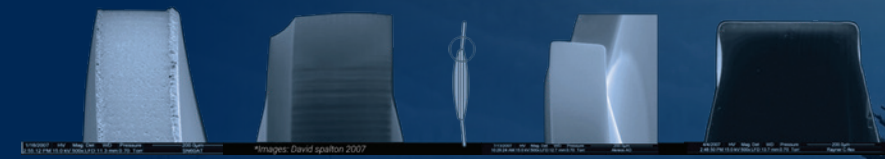
The Active defocus curve



Study by Joon Hyun Kim MD, PhD; ESCRS 2018

Sharpest Square Edge

The novel manufacturing technology enables to achieve exceptionally sharp 360° square edge, proven to be effective against PCO along with a wide-angle contact with the capsular bag.



SN60AT*

Active

AKREOS AO*

C-Flex