

Active BNEZ

By Hanita Lenses

Active technology

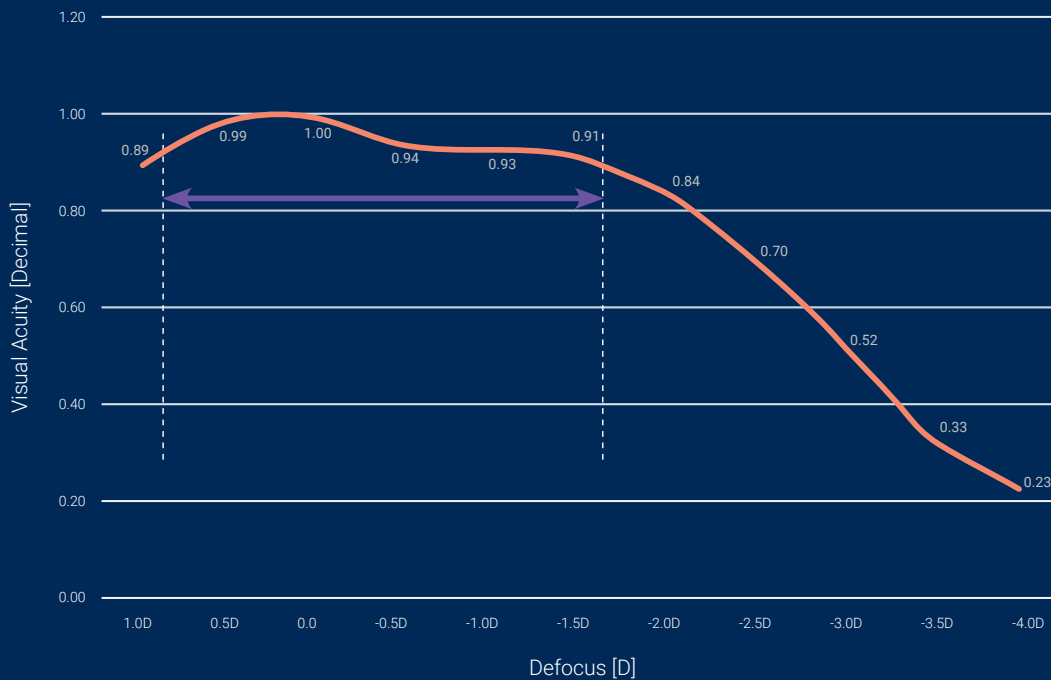
Hanita lenses introducing its EDOF lens, the Active lens. employing a diffractive pattern that allows your patient spectacle freedom for both far and intermediate vision.

BunnyLens



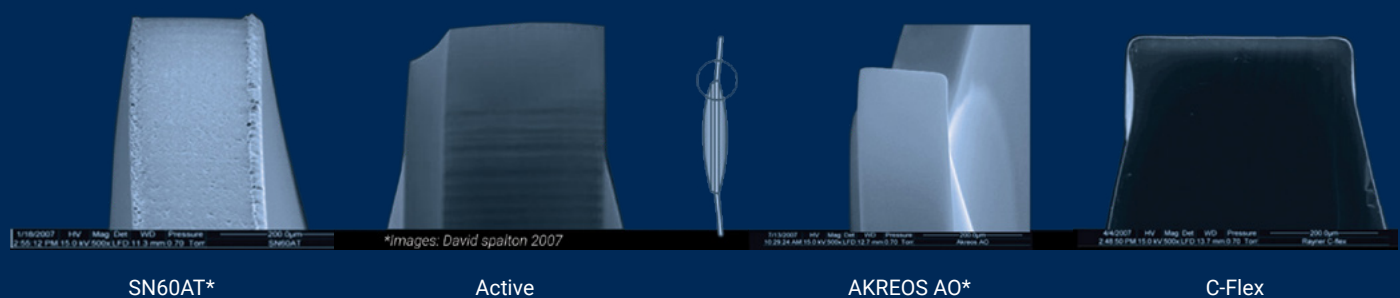
Provide your patient with a real EDOF solution

The Active defocus curve

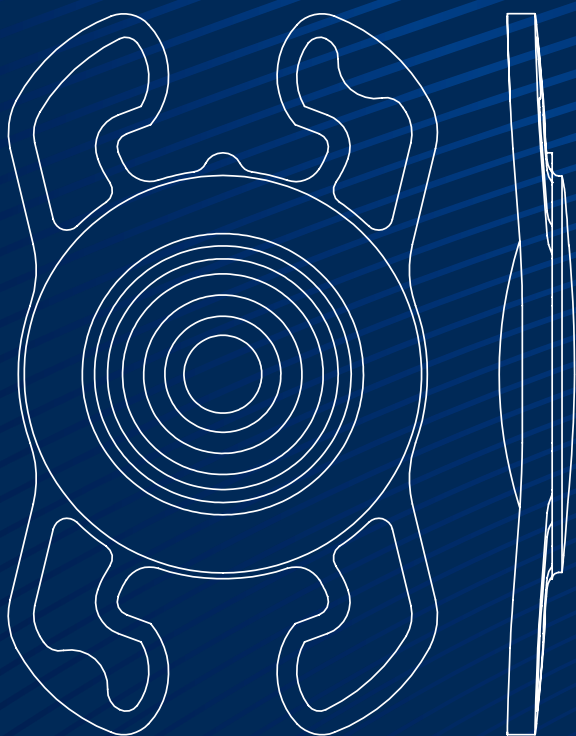


Sharpest Square Edge

The novel manufacturing technology enables to achieve exceptionally sharp 360° square edge, proven to be effective against PCO along with a wide-angle contact with the capsular bag.



Lens specification



Lens model |

BunnyLens MF

Diameter |

11mm (10 D and above)

11.5mm (9.5 D and below)

Power range |

0 to +30.0 (0.5D increments)

+31.0 to +35.0 (1D increments)

Geometry |

Optic Diameter: 6.0 mm

Haptic angulation: 5°

Double square edge

Material |

Hydrophilic acrylic with UV-blocking and violet filtering chromophore

Refractive index: 1.46 (35° C)

Nd-YAG Laser |

Compatible

Optical Design |

Diffraction

Incision Size |

1.8 mm

Placement |

Capsular bag

A Constant |

Optical / Immersion US biometry 118.5



Hanita Lenses

Kibbutz Hanita 2288500 | marketing@hanitalenses.com

www.hanitalenses.com

Tel +972 4 9950700

Fax +972 4 9950755